



Service Manual for:

NVL

Vista

Series

Public Use Wheelchair Lifts

Series 02

DOT — Public Use Lift

"DOT — Public Use Lift" verifies that this platform lift meets the "public use lift" requirements of FMVSS No. 403. This lift may be installed on all vehicles appropriate for the size and weight of the lift, but must be installed on buses, school buses, and multi-purpose passenger vehicles other than motor homes with a gross vehicle weight rating (GVWR) that exceeds 4,536 kg (10,000 lb).

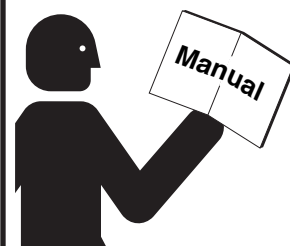


"Providing Access to the World"®

International Corporate Hdqrs: P.O. Box 310 Winamac, IN 46996 USA
1-800-THE LIFT (574) 946-6153 FAX: (574) 946-4670



! WARNING



Read manual
before installing
or servicing lift.
Failure to do so
may result in
serious bodily
injury and/or
property damage.

31823 Rev. A
February
2008

Patent #5,261,779 Patent #6,599,079
Patent #6,065,924 Patent #6,692,217
Patent #6,238,169 Patent #6,739,824
Patent #6,464,447 Patent #6,837,670 Patents Pending

Braun NVL Series

Congratulations

We at The Braun Corporation wish to express our fullest appreciation on your new purchase. With you in mind, our skilled craftsmen have designed and assembled the finest lift available.

This manual provides service-related material. Refer to the FMVSS No. 403 Quick Reference Installation Sheet for installation instructions, operating instructions and maintenance procedures.

Braun Vista Series™ lifts are built for dependability and will provide years of pleasure and independence as long as the lift is installed and serviced as specified by a Braun certified technician, and the lift is operated by an instructed person.

Sincerely,
THE BRAUN CORPORATION

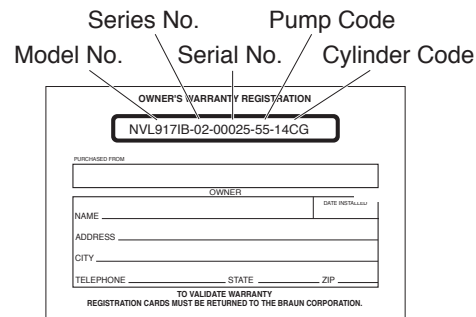


Ralph W. Braun
Chief Executive Officer

Warranty and Registration Instructions

Immediately upon receiving the lift, examine the unit for any damage. Notify the carrier at once with any claims.

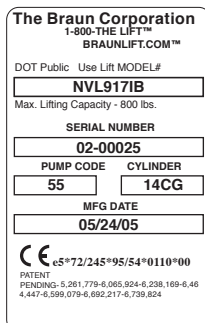
Two warranty/registration cards (shown right) are located in the lift-mounted manual storage pouch. The sales representative must process one of the cards. The consumer must fill out the other card and mail it to The Braun Corporation. The warranty is provided on the back cover of this manual. The **warranty cards must be processed to activate the warranty.**



The form is titled 'OWNER'S WARRANTY REGISTRATION'. It contains a box for the registration number 'NVL917IB-02-00025-55-14CG'. Below this, there are fields for 'PURCHASED FROM', 'OWNER', 'NAME', 'ADDRESS', 'CITY', 'TELEPHONE', 'STATE', and 'ZIP'. A note at the bottom states 'TO VALIDATE WARRANTY REGISTRATION CARDS MUST BE RETURNED TO THE BRAUN CORPORATION.'

Sample Warranty/Registration Card

Two Braun Serial No./Series No. identification tags (shown below) are posted on the lift. One I.D. tag is posted on the opposite pump side vertical arm. A second I.D. tag is located on the opposite pump side tower. Both I.D. tags provide the product identification information provided on the warranty/registration card. Record the information in the space provided (or document on a copy). **This information must be provided when filing a warranty claim or ordering parts.**



The tag is from 'The Braun Corporation' with contact information '1-800-THE LIFT™' and 'BRAUNLIFT.COM™'. It includes fields for 'DOT Public Use Lift MODEL#', 'SERIAL NUMBER', 'PUMP CODE', 'CYLINDER', and 'MFG DATE'. The values shown are 'NVL917IB', '02-00025', '55', '14CG', and '05/24/05'. At the bottom, there is a CE mark and a patent number 'eS*72/245*95/54*0110*00'.

Sample Serial No./Series No. Identification Tag

Model No. _____

Series No. _____

Serial No. _____

Pump Code _____

Cylinder Code _____

Date of Manufacture _____

Contents

Troubleshooting

Certification Checklist Diagnostic Procedures	2-3
Lift Electrical Schematic	4
Lift Wiring Diagram	5
Switch and Sensor Locations	6
LCD Error Codes	7

Hydraulics

Hydraulic Schematic	8
Hydraulics Parts List	9
Hydraulics Diagram	10

Repair Parts

Pump Module

Pump Module Parts List	11
Pump Module Diagram	12

Lift Exploded View

Repair Parts List	13
Exploded View	14

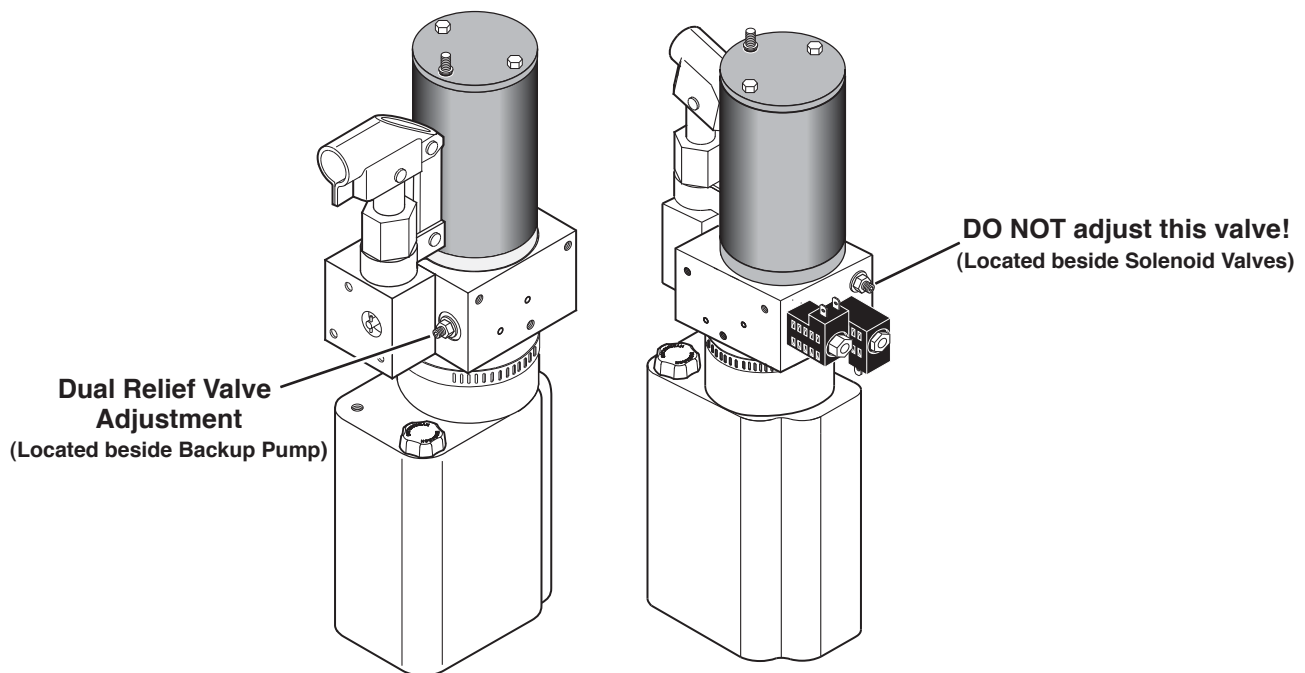
Certification Checklist Diagnostic Procedures

Use the following adjustment procedures should the lift not function as described in the certification checklist. These procedures must be followed in order for the lift to be FMVSS 403/404 compliant.

- Vehicle movement is prevented unless the platform is fully stowed.
 1. Verify lift stowed signal - pin 7 on the pump module has a +12 volt output signal from lift.
 2. Refer to the interlock installation instructions.

- Lift operation shall be inhibited unless the vehicle is stopped and vehicle movement is prevented.
 1. Verify vehicle secure signal (pin 6) has a +12 volt input signal from interlock.
 2. Refer to the interlock installation instructions.

- The platform will not fold/stow when at least 50 pounds is on the platform.
 1. Position the platform at the floor level loading position.
 2. Loosen the locknut on the dual relief valve adjustment (do not remove locknut). See illustration below.
 3. Turn the adjustment screw counter clockwise until the platform does not fold when the Fold button is pressed.
 4. Turn the adjustment screw clockwise in 1/4 turn increments and press the Fold button until the platform folds completely (Note: return the platform to floor level position after each attempt to fold the platform).
 5. Turn the adjustment screw an additional 1/8 turn after the platform folds successfully.
 6. Tighten the locknut without moving the adjustment screw.
 7. Verify the platform will not stow with at least 50 pounds on the platform.



Certification Checklist Diagnostic Procedures

- The inner rollstop will not raise if occupied by at least 25 pounds.
 - Call Product Support

- The outer barrier will not raise if occupied by at least 25 pounds.
 - Call Product Support.

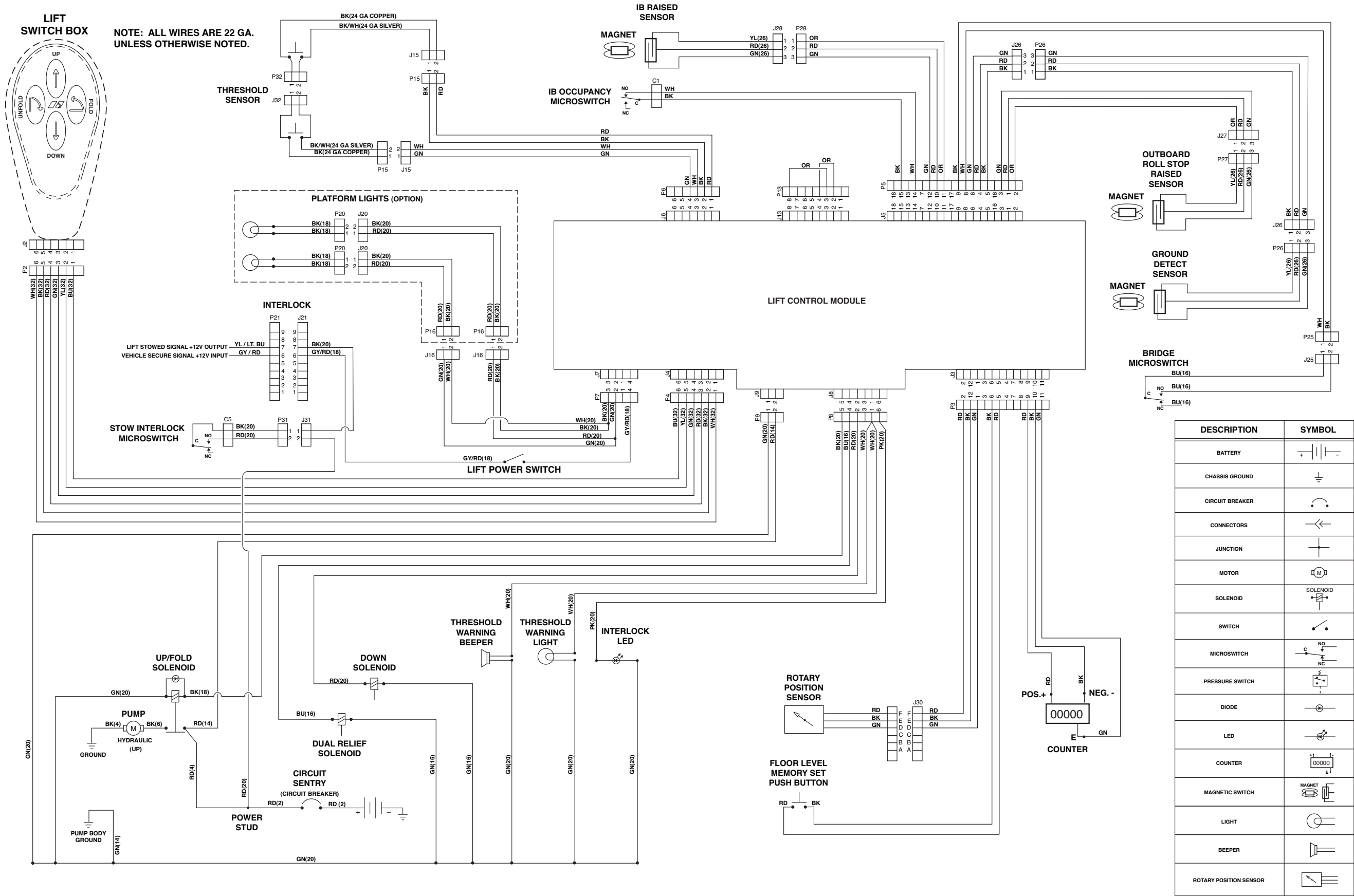
- Verify platform lighting when lift is deployed.
 1. Replace bulb(s) in the light housing.
 2. Check fuse (5 amp fuse on circuit board; F13)

- An audio warning (and visual warning for public lifts) will activate if at least 25 pounds is on the threshold area when the platform is at least 1" below floor level.
 1. Remove the threshold warning plate
 2. Verify the threshold strip switch connectors are connected (see illustration on Page 6)
 3. Replace the threshold strip switch
 4. Reinstall the threshold warning plate

- Lowering the platform beyond the inner rollstop locking position is allowed only when the inner rollstop is locked in position.
 - Call Product Support.

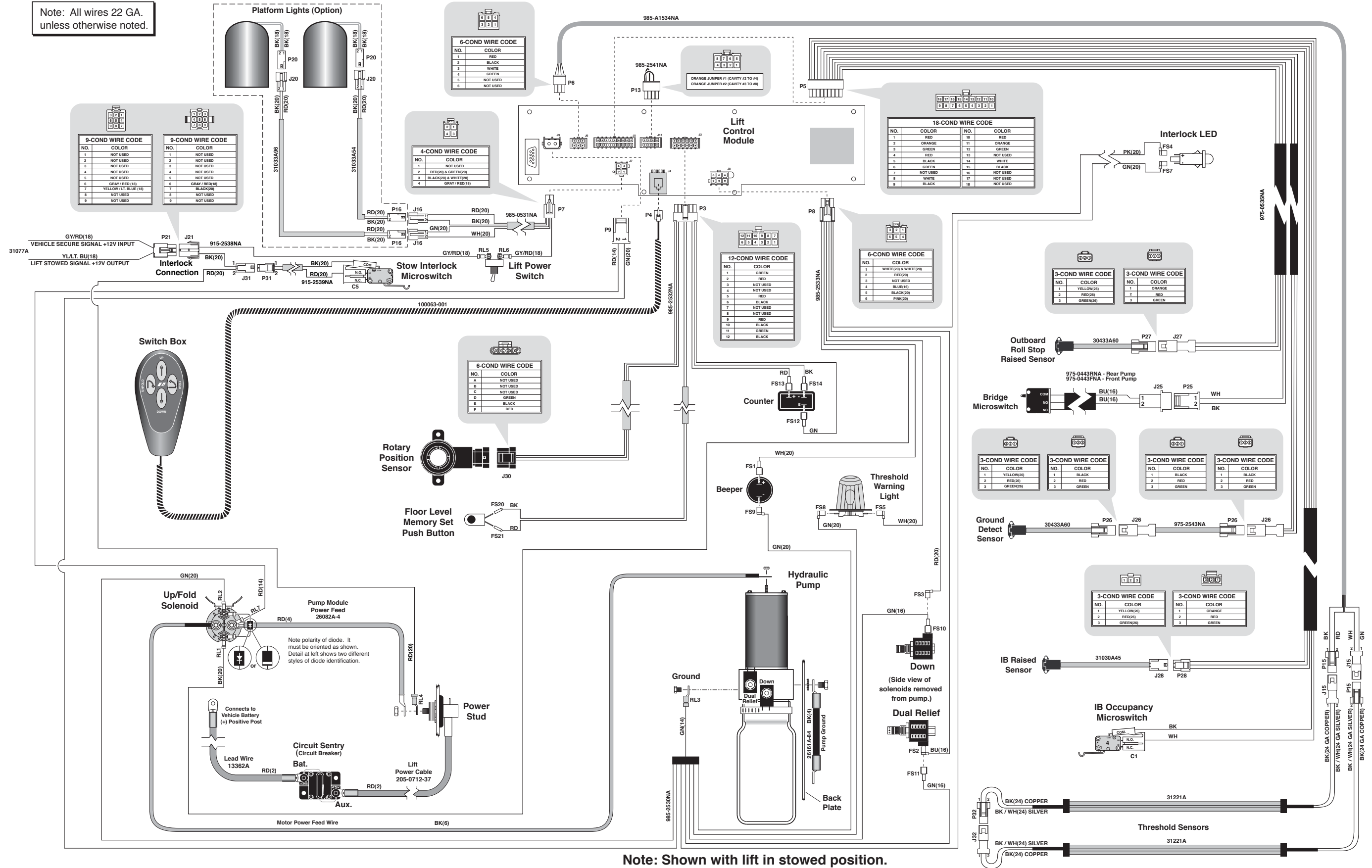
- Raising the platform more than 3" off of the ground is prevented unless the outer barrier is raised.
 - Call Product Support.

Lift Electrical Schematic



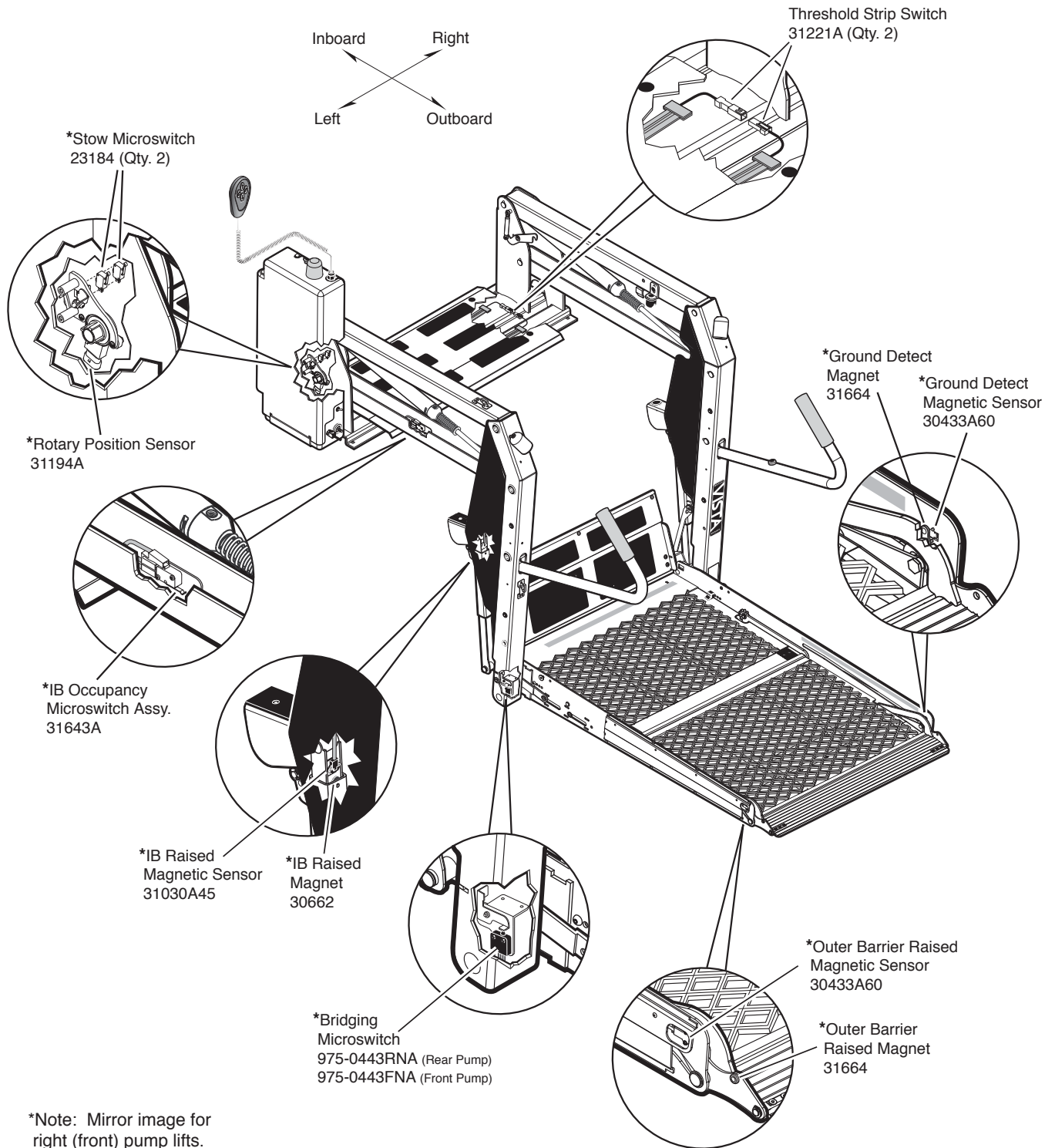
Lift Wiring Diagram

Note: All wires 22 GA.
unless otherwise noted.



Note: Shown with lift in stowed position.

Switch and Sensor Locations



Troubleshooting

Listed below are codes that the lift controller outputs during lift operation. The codes will be displayed on an LCD screen located on the lift control board inside the pump module. See the Manual Operating Instructions in the operator's manual for pump cover removal instructions.

Vista LCD Codes

Non-Flashing Numbers

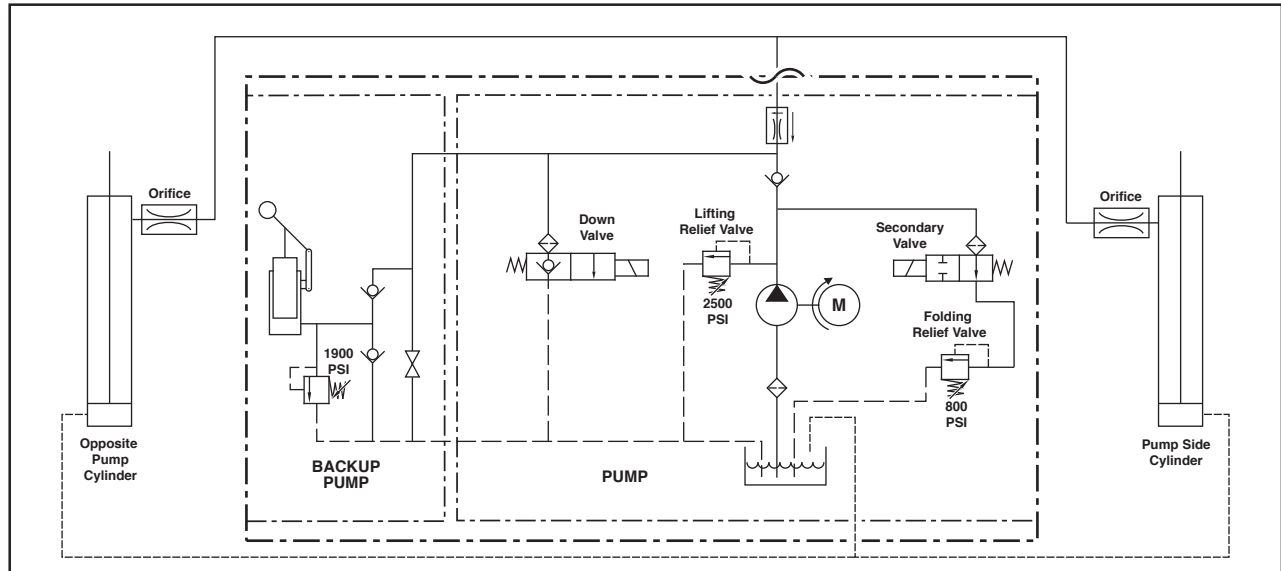
- 01 – Platform Stowed
- 02 – Platform Unfolding
- 03 – Platform Unfolding Paused
- 04 – Platform at Floor Level
- 05 – Platform Beginning to Lower
- 06 – Platform Lowering (Threshold Cannot Be Occupied from this Point Down)
- 07 – Platform Lowering (I.B. must be up from this point down)
- 08 – Platform at Ground Level
- 09 – Outer Barrier Moving to Vertical Position
- 10 – Platform Raising (above I.B.)
- 11 – Platform Raising Paused at Floor
- 12 – Platform Folding (limited pressure)
- 13 – Platform Folding (full pressure)
- 14 – Timed Fold (Cinching Lift Tite) or (Anti-Rattle State)
- 15 – Platform Folding Stopped
- 28 – Illegal Function/Not Defined
- 29 – Interlock Fault Not Recognized
- 30 – Platform Location Unknown
- 31 – Platform Location Transition State; Attempting to Locate Position
- 50 – Outboard Barrier Is Not Up When Tower 4 LED Is Not On
- 51 – Threshold is Occupied When Tower 2 LED Is Not On

- 52 – Inboard Barrier Is Not Up and Locked When Tower 1 and Tower 4 LED's Are On
- 53 – Inboard Barrier Occupied Sensor Is Not Activated When Tower 1 and Tower 2 LED's Are On
- 55 – Outboard Barrier is Not Up When the Ground Detect Switch is Not Activated
- 75 – Low Voltage Detected; must turn off power switch to reset LCD
- 77 – Vehicle Secure Interlock has not been activated
- 99 – Controller Program is not Valid; Replace Controller

Flashing Numbers

- Flashing 65 – Unfold button is pressed
- Flashing 66 – Fold button is pressed
- Flashing 67 – Down button is pressed
- Flashing 68 – Up button is pressed
- Flashing 69 – Bridge switch is activated
- Flashing 71 – Ground detect switch is activated
- Flashing 72 – Outboard barrier up switch is activated
- Flashing 73 – Inboard barrier up switch is activated
- Flashing 74 – Inboard barrier occupied switch is activated
- Flashing 78 – Threshold tape switch "A" is activated
- Flashing 79 – Threshold tape switch "B" is activated
- Flashing 83 – Tower #1 switch is activated
- Flashing 84 – Tower #2 switch is activated
- Flashing 85 – Tower #3 switch is activated
- Flashing 86 – Tower #4 switch is activated

Hydraulic Schematic



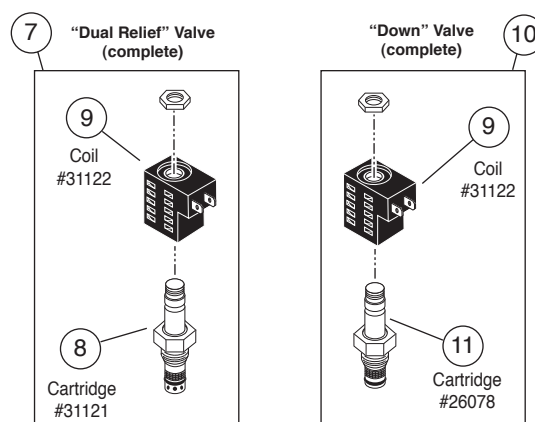
Description	Symbol	Description	Symbol
Fixed Displacement Pump		Hydraulic Port	
Pump Motor		2 Way 2 Position Solenoid Valve	
Backup Pump		Pressure Compensated Flow Control	
Single Acting Cylinder		Relief Valve	
Check Valve		Filter Screen	
Unfold Orifice		Vented Reservoir	
Manual Shutoff Valve			

Hydraulics Parts List

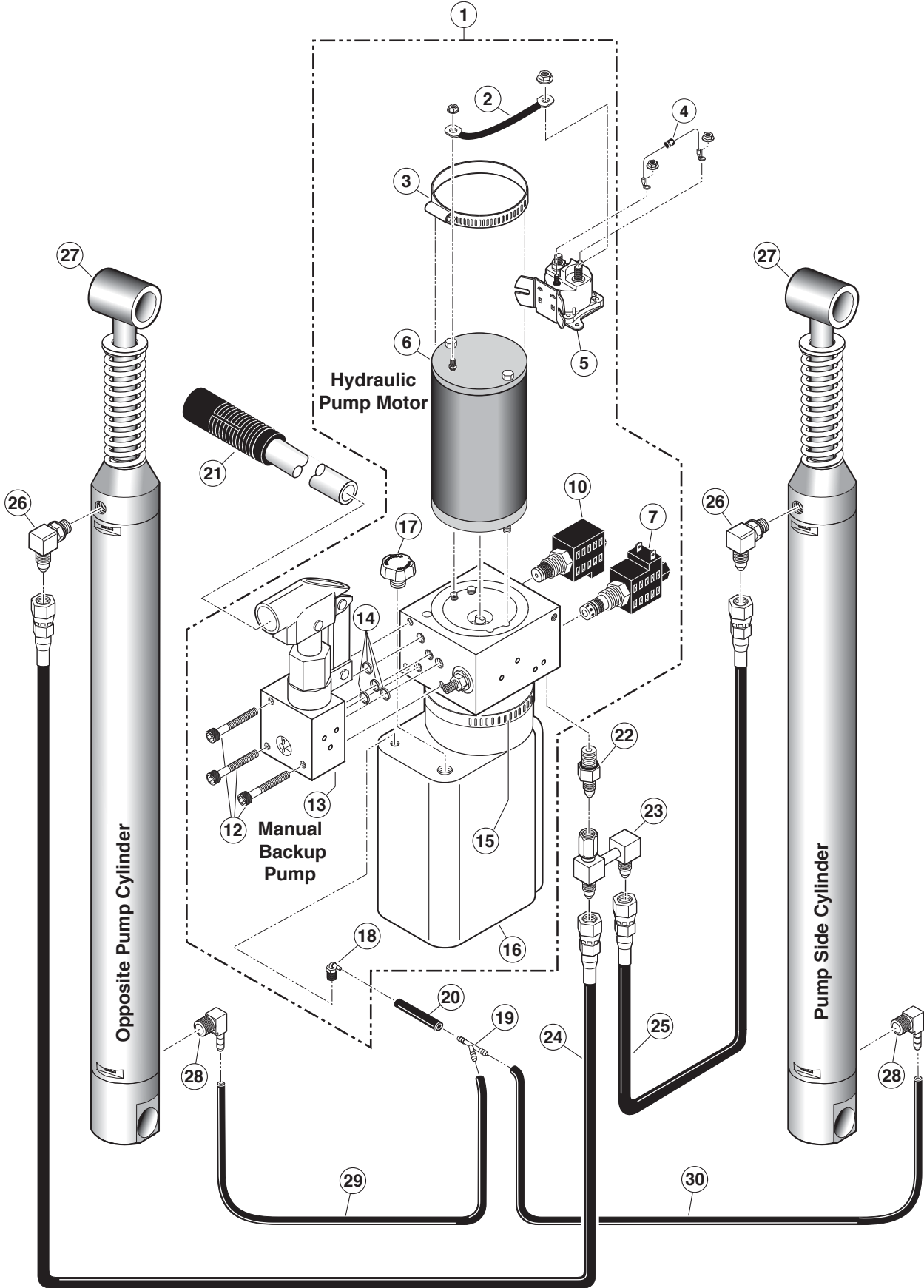
Item	Qty.	Description	Part #
1	1	Pump Assembly (M-268-0112) 120G / 12V / Dual Relief	30915-12V
2	1	Lead Wire Assembly, #6 Gauge	29049
3	1	Clamp, Hose (M258)	29663
4	1	Diode Assembly, Up Solenoid	73906A
5	1	Solenoid, 4-Post (See Pump Module Exploded View for Solenoid Selection)	
6	1	Motor, Pump - 12 Volt - Low RPM	29690
7	1	Valve Assembly, "Dual Relief" (complete)	31120K
8	1	Cartridge (only), "Dual Relief" Valve - (shown below)	31121
9	2	Coil (only) - (shown below)	31122
10	1	Valve Assembly, "Down" (complete)	31348K
11	1	Cartridge (only), "Down" Valve - (shown below)	26078
12	3	Screw, 1/4-20 x 2-1/4", Allen Head	26080
13	1	Hand Pump (Backup) with O-Rings (Item 11)	26074
14	4	O-Ring (only), Hand Pump Mounting	17351
15	1	Clamp, Reservoir - H-48 (M259)	17069
16	1	Reservoir, Hydraulic Fluid	30160
17	1	Cap, Reservoir Filler - Screw On	30167
18	1	Fitting, 90° - 1/8" NPT x 1/8" Barb - Plastic	87563
19	1	Connector, Plastic "Y", 1/8" O.D.	18877
20	1	Hose, Thermal Plastic - Black, 1/8" I.D.	23742R* (6")
21	1	Handle with Grip	17206A
22	1	Fitting, Male 7-16-20 SAE O-Ring to Male 7/16-20 JIC 37°	24504
23	1	Elbow, 7/16-20 JIC 37 Female Swivel (1) - 7/16-20 JIC 37° Male (2)	26579
24	1	Hose Assembly, 1/8" (Opposite-Pump-Side)	16004A-086
25	1	Hose Assembly, 1/8" (Pump-Side)	16004A-046
26	2	Elbow, 90°, 7/16-20 SAE O-Ring Male - 7/16-20 JIC 37° Male, Orifice	26667
27	2	Cylinder ✓	C1514.3-9408
28	2	Elbow, 90°, 1/4 NPT Male to 1/4" Barbed	15150
29	1	Hose, Thermal Plastic - Black, 1/8" I.D.	23742R* (68")
30	1	Hose, Thermal Plastic - Black, 1/8" I.D.	23742R* (30")

✓ **Seal Kits:** If repairing a cylinder, order Seal Kit #1500-0500P.

* Raw material items ordered and priced per inch (order specified length).



Hydraulics Diagram



Pump Module Parts List

Item	Qty.	Description	Part No.
	1	Pump Module (complete), 12 Volt, Rear	985-2516RNA
1	1	Pump Assembly (M268-0112) 12V-120G - Duel Relief (Includes Items 2 & 3)	30915-12V
2	1	Power Cable, Up Solenoid to Motor	29049
3	1	Solenoid, Up - 4-Post - Trombetta	31129
4	1	Diode Assembly, Up Solenoid	73906A
5	2	Nut, #10-32 Serrated Flange	83080
6	1	Fitting, Male 7/16-20 O-Ring to Male 7/16-20 JIC 37°	24504
7	1	Elbow, Female Swivel 7/16-20 JIC 37° to (2) Male 7/16-20 JIC 37°	26579
8	1	Control, Hand Pendant Assembly - Standard (Includes Items 9-17)	100063-001
9	1	Keypad, Hand Control	30000
10	1	Hand Pendant Case - Front	100027-001
11	1	Seal, Hand Control - Standard	100066-001
12	1	Module, Hand Control	100041-001
13	1	Screw, 10-32 x 1/2", Phillip, Pan Head	82744
14	1	Hand Pendant Case - Rear	100028-001
15	1	Hanger, Round - Hand Control	73793
16	2	Screw, #4-40 x 1/4", Phillip, Pan Head	11480
17	1	Cord, Coiled - 6-Conductor	100044-001
18	1	Strain Relief - Liquid Tight	30753
19	1	Control Board Assembly	100159-001
20	8	Standoff, Snap-In (2 shown)	31011
21	1	Switch, Push Button	29534
22	1	Diode, Green LED, Panel Mount	29545
23	1	Stud, Power Feed	26084
24	1	Rubber Boot, Red ♦ See note below	82046
25	1	Cover, Pump, 2-Piece - Back (Complete Assembly 915-0513RNA Includes Items 25 - 32)	915-0513RN
26	1	Recepticle, Clip On	28803
27	1	Lens, Threshold Warning - Red	30704
28	1	Decal, Warning / Pressure Relief Valve (Not shown - see Decal Section)	22249
29	1	Spacer, Lens - NHTSA	31386
30	1	Metal Ring Base - Lamp	30971
31	1	Socket, Lamp	30703
32	3	Screw, #8-32 x 1/2" Pan Head Phillips - Thread Cut	30974
33	1	Bulb, Light	19841
34	1	Switch, Toggle	12185
35	1	Decal, Lift Power - On/Off (Not shown - see Decal Section)	21494
36	2	Washer, 5/16" Flat	10063
37	2	Bolt, 5/16-18 x 3/4", Nylock, Hex * See note below	29608
38	2	Bolt, 5/16-18 x 1/2", Nylock, Hex * See note below	10012
39	1	Cable, Ground	26161A-84
40	1	Washer, 5/16" External Tooth	16368
41	1	Beeper, Continuous	30487
42	1	Harness, Interlock Interface	31077A
43	1	Plate, Backing / Mounting - Rear	985-2501RN
44	1	Pump Handle with Grip	17206A
45	1	Clamp, Hose - Solenoid Mounting	29663
46	1	Solenoid, Up - 4-Post - Prestolite	28308
47	1	Cover, Pump - 2-Piece - Top / Front (Complete Assembly 985-0519RNA Includes Items 47 - 58)	915-0519RN
48	1	Stud, Wing Head - 1/4 Turn	28804
49	1	Retainer, Push On	28805
50	1	Plug, Window - Clear	30443
51	1	Clip, Pump Handle - Top	915-5517
52	1	Washer, Nylon, 1/4" I.D. x 11/16" O.D. x .030"	12690
53	1	Clip, Pump Handle - Bottom	915-5518
54	3	Rivet, Pop, SD43BS - 1/8" - .13"/.19"	12954
55	1	Decal, Removal / Installation Pump Handle (Not shown - see Decal Section)	29052
56	1	Decal, Manual Instructions - Public (Not shown - see Decal Section)	31412
57	1	Decal, Removal / Installaton - Pump Cover (Not shown - see Decal Section)	29051
58	1	Decal, Warning - Control Board Damage - ESD (Not shown - see Decal Section)	30787
59	1	Cable, Pump Module Power Hookup (Not shown - see Wiring Diagram)	26082A-4
60	1	Harness, Power (Not shown - see Wiring Diagram)	985-2530NA
61	1	Harness, Interlock / Lighting (Not shown - see Wiring Diagram)	985-0531NA
62	1	Harness, Up / Down Solenoid (Not shown - see Wiring Diagram)	985-2533NA
63	1	Harness, Extension - Threshold Switch (Not shown - see Wiring Diagram)	985-A1534NA
64	1	Harness, Jumper (Not shown - see Wiring Diagram)	985-2541NA
65	1	Harness, Stow Interlock (Not shown - see Wiring Diagram)	915-2538NA

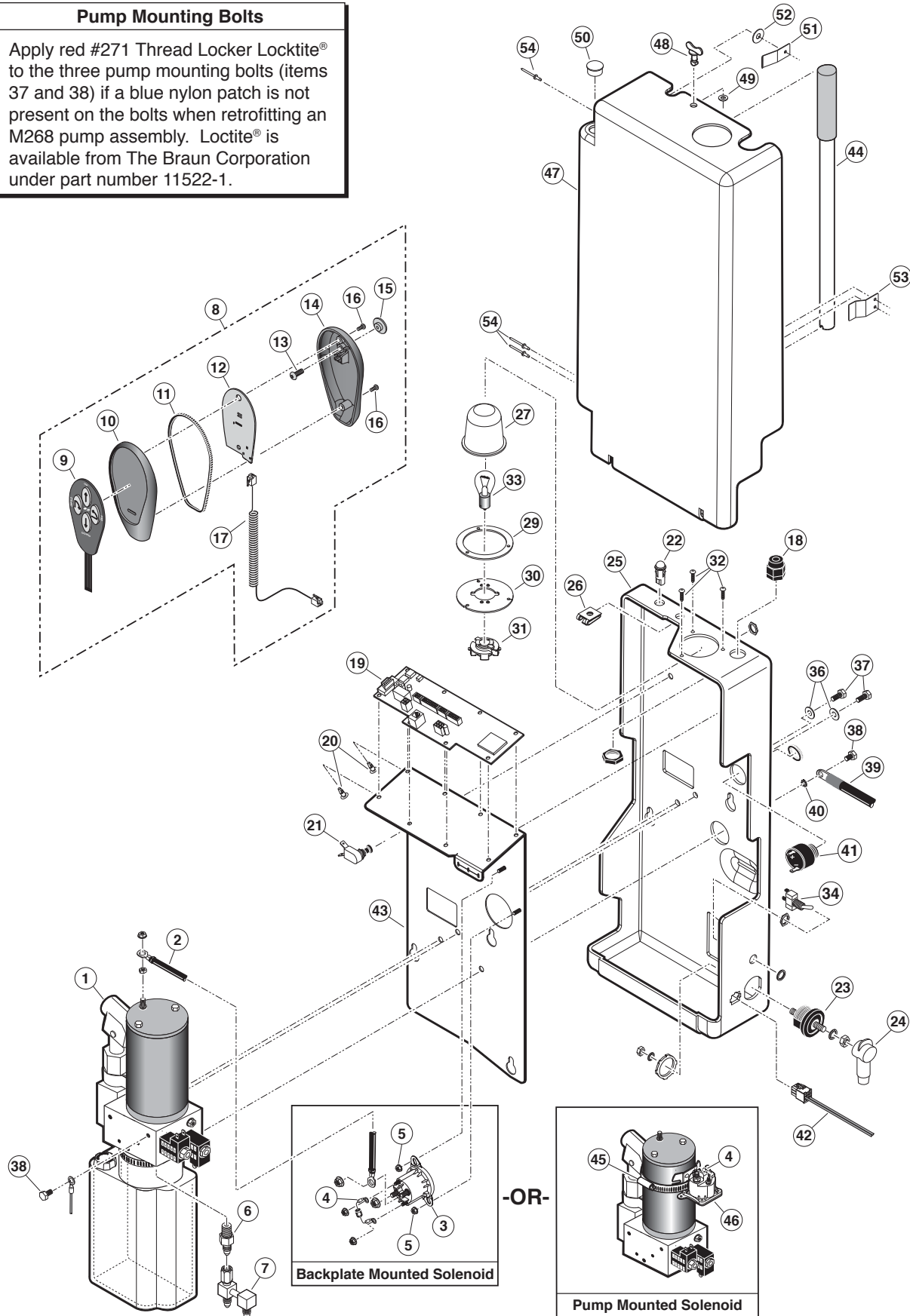
* Apply red #271 Thread Locker Loctite® to the four hex bolts (items 37 and 38) if a blue nylon patch is not present on the bolts when retrofitting an M268-0112 pump assembly. Loctite® is available from The Braun Corporation under part number 11522.

♦ Indicates items available for replacement part purposes **only**. These items **are not** included with replacement pump modules.

Pump Module Diagram

Pump Mounting Bolts

Apply red #271 Thread Locker Loctite® to the three pump mounting bolts (items 37 and 38) if a blue nylon patch is not present on the bolts when retrofitting an M268 pump assembly. Loctite® is available from The Braun Corporation under part number 11522-1.



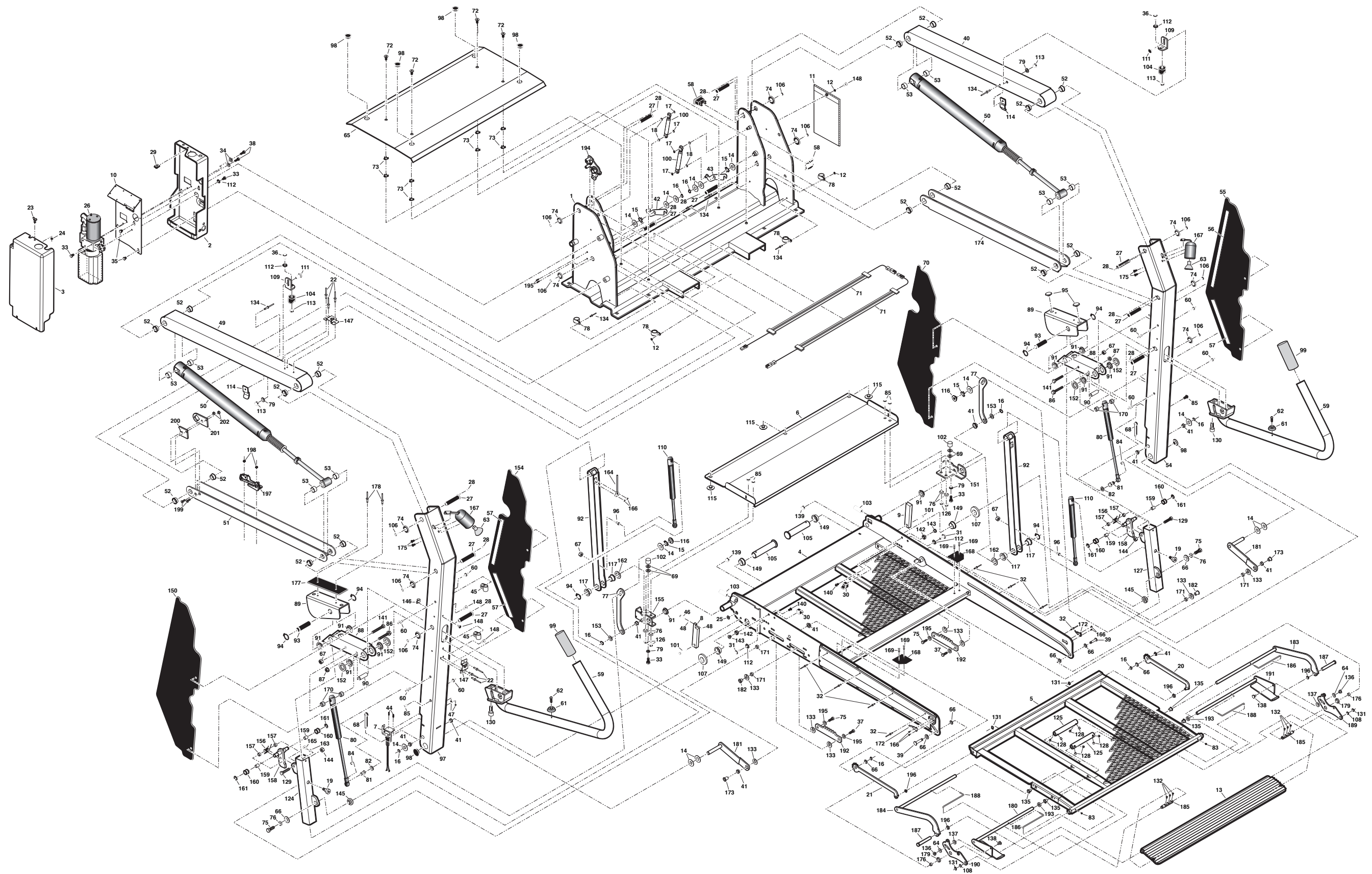
Repair Parts

Part Numbers of Items Dedicated per Lift Model				
Item	Qty.	Description	NVL917IB	
1	1	Base Weldment	975R0148NA33	
2	1	Cover, Pump, 2-Piece, Back-Bottom	915-0513RN	
3	1	Cover, Pump, 2-Piece, Top-Front Assy.	915-0519RN	
4	1	Platform Weldment Fixed Inner	975-03351NW	
5	1	Platform Weldment Movable Outer	975-0336NW	
6	1	Inner Roll Stop	915-0147NWY	
7	1	Bridge Switch Assembly	975-0443RNA	
8	1	Block, Platform Stop - Bridging - Rear	25778	
9	1	Block, Platform Stop - Bridging - Front	900-0311	
10	1	Plate, Backing/Mounting Rear	985-2501RN	

Part Numbers of Items Identical on All Lift Models				
Item	Qty.	Description	Part No.	
11	1	Bag, Vinyl - 7" x 10"	31174	
12	3	Washer, #10, Flat, Auto BK	11541	
13	1	Roll Stop, 33"	975-0312NV	
14	14	Washer, 5/16" I.D. x 1" O.D. x .0269", Auto BK	15328	
15	4	Washer, Finger, Disc Spring	27276	
16	4	Snap-Ring 1/2"	13273	
17	4	Snap-Ring 5/16"	24570	
18	4	O-Ring, 5/16" I.D. x 1/16" O.D.	26614	
19	2	Screw, Socket Head, 3/8-16 x 1/2" with 1/2" Shoulder	25029	
20	1	Gear Assembly, Front	975-2328FRABKN	
21	1	Gear Assembly, Rear	975-2328RRABKN	
22	6	Rivet, Pop, 1/8" - 13/19"	12954	
23	1	Stud, Wing Head	28804	
24	1	Retainer, Push-On	28805	
25	1	Grommet, ID .312", FR .250", GD .813" T500"	27726	
26	1	Pump Assembly, (M268 with Backup Pump)	30915-12V	
27	10	Pin, Pivot, Parallel Arm	917-0403	
28	10	Screw Drive #8 x 3/16" Long Black	31086BK	
29	1	Receptacle, Clip-On	28803	
30	2	Bumper, Stow, Millennium	26154	
31	2	Bolt, 6/16-18 x 1/2", Button Head, Socket Cap	26281	
32	8	Rivet, Pop, SD43BS - 1/8" - 13/19	12954	
33	4	Bolt, 5/16-18 x 1/2" Nylock, Hex	10012	
34	2	Washer, 5/16" Flat	10063	
35	2	Bolt, 3/8-16 x 1/2" Nylock, Hex	29729	
36	2	Bolt, 5/16-18 x 3/4", Button Head, Soc Cap Hd	24440	
37	2	Bolt, 3/8-16 x 3/4" GR5-Hex, Auto, BK	12463	
38	2	Bolt, 5/16-18 x 3/4" Nylock, Hex	29608	
39	2	Pin, Bearing, Platform Slide	975-2360	
40	1	Parallel Arm Assy., Top-Front w/Bearings	915-0437FA	
41	2	Bearing, Flange, 1/2" x 1/4"	24442	
42	1	Weldment, Latch, Lift/Tite, Rear	29412RW	
43	1	Weldment, Latch, Lift/Tite, Front	29412FW	
44	2	Screw, #4-40 x 5/8", Round Head	14810	
45	2	Clip, Cable, 5/16", Plastic	26948	
46	1	Screw, #8-32 x 1", Mach. Truss Head	19912BK	
47	2	Nut, #8-32 w/Lockwasher	19537	
48	2	Nut, #8-32, Hex	10777	
49	1	Parallel Arm Assy., Top-Rear w/Bearings	975-2437RA	
50	2	Cylinder, 14.625"/29.146" Retracted	C1514.3-9408	
51	1	Parallel Arm Assy., Bottom w/Bearings and Sensors - Rear	975-0458NA	
52	16	Bearing, Flange, 3/4" x 3/8"	24011	
53	8	Bushing, 3/4" I.D. x 1/2"	900-0456	
54	1	Vertical Channel Weldment, Front, 48"	975-0448FNW	
55	1	Cover, Plastic, Parallel Arm, O/S Front-w/Tape	915-0704NA	
56	2	Tape, 1" Wide S-Face Foam, x 14" (1 Shown)	82015R014	
57	6	Tape, 1" Wide S-Face Foam, x 10" (3 Shown)	82015R010	
58	1	Cycle Counter-LCD Without Reset	30547	
59	2	Handrail Weldment	985-0618NW	
60	8	Rivet, Push In - 8MM	30063	
61	2	Bumper, Rubber, 31/32" O.D.	10950	
62	2	Screw, #8-18 x 1/2", Self-Tap, Phillips	33583	
63	2	Bulb, Light 20-W, Halogen Reflector	31060	
64	2	Washer, 3/32" I.D. x .75" O.D., .062" T-UHMW	31438	
65	1	Base Cover Assembly, 33" (Traction Tape Not Shown)	975-0148KS33Y	
66	6	Washer, Thrust, .875" O.D., .50" I.D., .058" ST	28371	
67	4	Nut, 3/8-16, Hex Lock	13617	
68	2	Cotter Pin, 1/4" x 2", Black	15886BK	
69	4	Washer, 1/4" Flat	10062	
70	1	Cover, Plastic, Parallel Arm, I/S Front-w/Tape	975-0701NA	
71	2	Threshold Strip Switch	31221A	
72	4	Screw, 1/4-20 x 1/2" FHSCS	18860	
73	8	Washer, Finger Disk Spring	30772	
74	10	Washer, 1/2" Flat Black Zinc	25346	
75	2	Bolt, 3/8-16 x 1", Hex	10025	
76	6	Washer, 3/8", Lock, Black	10069BK	
77	2	Lever, Inboard Barrier	975-0404N	
78	4	Clamp, Insulate, 1 3/8" I.D.	29765	
79	4	Washer, 5/16" Lock, Black	10068	
80	2	Gas Spring, Fold Arm	29186	
81	2	Ball Stud, Gas Spring, 13MM x 3/8-16 F. Thread	29185	
82	2	Washer, 3/8", Lock	10069	
83	2	Screw, 1/4-20 x 1/4", Set	11563	
84	2	Clip, Safety, 3/8-16 x 3/4", Flange	12608	
85	6	Bolt, 3/8-16 X 3/4", Flange Button Head, Socket Cap	25171	
86	2	Bolt, 5/16-18 x 2", Flange, Hex	25130	
87	2	Nut, 5/16-18, Serrated Flange	25131	
88	2	Arm, Slide Support	985-6612N	
89	2	Slide, Platform, Rotate, Weldment	985-0606N	
90	2	Spacer, 5" O.D. x 3/4" I.D. x 1.515" LG	25132	
91	10	Bearing, Flange, 3/4" x 1/4"	24012	
92	2	Weldment, Platform Pivot Arm - 48"	985-0640NW-BKN	
93	2	Pin, Pivot, Lower Arm	900-0413N	
94	6	Ring, Snap, 3/4", External	18657	
95	2	Bearing, UHMW, Flat, 1.226"	205-1760	
96	2	Ball Stud, 10MM	21301	
97	1	Vertical Channel Weldment, Rear	975-0448RNW	
98	6	Plastic End Cap, 1" I.D. x 1 1/4" O.D.	20474	
99	2	Grip, Handle, Yellow	19074	
100	2	Spring, Dampener, Retract	26963	
101	2	Bolt, 5/16-18 x 1 1/4" Low Socket Hd., Cap, Bk.	26327	
102	2	Bumper, .75" x .625" Long	915-0391	
103	2	Screw, 1/2-20 x 1 1/2" Set Lock, Black	18663	
104	2	Block, Guide-Platform Stow	28593	
105	2	Pin, Platform	975-2325	
106	10	Screw, 5/16-18 x 3/4", SHFS	25527	
107	2	Spacer, UHMW, Vertical Channel	995-0320	
108	2	Washer, 376" I.D. x .563" O.D. .032" T-18-8 SS	31514	

Item	Qty.	Description	Part No.	
109	2	Bracket, Mounting, Quiet Ride		915-0392
110	2	Gas Spring, 12.2" Extended/8.3" Compressed		30550A
111	2	Bolt, 5/16-18 x 3/4", Carriage, Black		15858BK
112	5	Washer, 5/16", External Tooth		16368
113	4	Nut, 5/16-18 Hex		10058
114	2	Bracket, Inner Side Panel Guide		915-0703
115	3	Bearing, UHMW, Flat, Thin, Black		916-5406
116	2	Pivot, Bridge Plate Lever, Upper, Inside		916-5433
117	4	Bearing, Flange - 3/4" x 1/2"		24027
118	1	Weldment, Latch, Foot-Mech., Roll Stop, Rear		975-0204RNW
119	1	Weldment, Latch, Foot-Mech., Roll Stop, Front		975-0204FNW
120	1	Rod 5/32", Torsion, Spring Bar, Front		28132F
121	1	Rod 5/32", Torsion, Spring Bar, Rear		28132R
122	1	Roll Stop, Arm, Rear		985-0203RNBKN
123	1	Roll Stop, Arm, Front		985-0203FRBKN
124	1	Weldment, Tube-IB Fold Arm-Rear		975-0625RNW
125	2	Collar, Roll Stop, Torsion Bar		975-2208PC
126	4	Nut, 3/8-16, Hex		10059BK
127	1	Weldment, Tube-IB Fold Arm-Front		975-0625FNW
128	8	Screw, 5/16-18 x 5/16", Set		11567
129	2	Bolt, 5/16-18 x 1 1/2" Hex Head, Cap		10014
130	2	Bolt, 7/16-20 x 1" SHCS, w/Nylock Patch		28474
131	4	Ring, 3/8" Retaining Snap		13889
132	6	Screw, #10-32 x 1/2, Flat Head-Hex w/Patch		17192P
133	8	Washer, Thrust, 1.125" O.D., .625" I.D., .0585" THK		29378
134	6	Rivet, Pop, 3/16"-25/32", Black		14993
135	4	Bearing, Flange, 10MM x 12MM, FMB1012DU		28128
136	2	Nut, 1/4-20 x 3/16", Roll Stop		975-0205N
137	4	Washer, Nylon, .34" I.D. x .74" O.D. x .62" T		31439
138	2	Nut, 1/4-20, Shoulder, Roll Stop		995-0211
139	2	Nut, 5/16-18, Top Lock, Black		28324BK
140	2	Bolt, 1/4-20 x 1/2", Button Head Socket		15733
141	2	Bolt, 3/8-16 x 2", Hex Head, Cap		10027
142	2	Roller Assembly		1000-2395A
143	2	Roller Retainer		915-5353
144	2	Nut, 5/16-18 Hex, Lock		11387BK
145	2	Pivot, Bridge Plate Lever, Upper-Outer		916-5434
146	1	Clamp, 1/4" I.D. - Nylon Loop		84396
147	2	Clip, Hand Control Hanger		84389
148	4	Rivet, Snap, .201" x .256"/.295"		26362
149	4	Bearing, Flange, 1" x 1/2-16FDU08		28031
150	1	Cover, Plastic, Parallel Arm, O/S Rear-w/Tape		915-0702NA
151	1	Weldment, Bridgeplate Bracket, Front		985-0431FNW
152	2	Washer, .060" x .76" x 1.25" O.D.		27734
153	2	Washer, 5/16" I.D. x .75" O.D. x .250", Black		25336
154	1	Cover, Plastic, Parallel Arm, I/S Rear-w/Tape		975-0703NA
155	1	Weldment, Bridgeplate Bracket, Rear		985-0431RNW
156	2	Spring, Torsion - .366 I.D. x .05"		30386
157	4	Spacer, IB Lock		30394
158	2	Weldment, IB Lock		985-0630NW
159	4	Bearing, 3/8" I.D. x 1/2" Long		30405
160	4	Roller, 65" O.D. x 1/2" Long		985-0631N
161	4	E-Clip, 3/8" Shaft		84383
162	2	Spacer, Handrail, 230" Thk. UHMW		911-5301
163	2	Magnet - Sensor Ring		30662
164	1	Harness, Sensor - Magnetic w/Plug - 37"		30433A37
165	2	Rivet, Snap, Black, 201" Hole x .177"/.217" Thick		30408
166	6	Rivet, Snap, Black, .158"/.197 Thick		25759
167	2	Light Assy, Vertical Channel		31062A
168	2	Pad, Roll Stop, Foot Stowed		975-2379
169	4	Plug, Interior, Plastic Push, Black		P50067-BK
170	4	Spacer, UHMW-.75" O.D. x .39" I.D. x .25"		30227
171	4	Bearing, Platform, Slide		975-2359
172	1	Harness, Sensor, Magnetic w/Plug - 60"		30433A60
173	2	Pin, Bearing, Gear Rack		975-2334
174	1	Parallel Arm Assy., Bottom w/Bearings-Front		917-0457NA
175	4	Screw, #10-32 x 1/2" Button Head, Socket, Cap		30375
176	2	Bearing, Platform, Slide		975-2358
177	1	Slide, UHMW Platform Rotate		31667
178	2	Rivet, Pop, 3/16" - .13/25" - SD64BS		11513
179	2	Spacer, 5/8" I.D., 7/8" O.D. x 3/16" L-UHMW		31678
180	1	Weldment, Latch Foot, Rear		975-0204RNW
181	2	Link, Weldment, Platform, Vertical Channel		975-2333W
182	2	Pin, Bearing, Gear Rack		975-2202
183	1	Roll Stop Pivot Arm Front		975-0216RNWY
184	1	Roll Stop Pivot Arm Rear		975-0216FNWY
185	2	Pin, Roll Stop, Vista		975-0217N
186	2	Rod, 5/32" Torsion Spring Bar, Rear		28132R
187	2	Pin, Bearing, Platform Slide		975-2360
188	2	Rod, 5/32" Torsion Spring Bar, Front		28132F
189	1	Assembly, Link, Roll Stop, Rear Pump, Front		975-0219FNA
190	1	Assembly, Link, Roll Stop, Rear Pump, Rear		975-0219RNA
191	1	Weldment, Latch Foot, Front		975-0204FNW
192	2	Gear Rack, Platform Fold		975-2329BKN
193	2	Washer, 390" I.D. x .75" O.D., .21" T-UHMW		31440
194	1	Assembly, Rotary Position Sensor		31094A
195	2	Screw, 1/4-20 x 3/4" BHSCS 18-8 SS		81068-000
196	4	Bearing, Flange, 3/8" I.D. x 1/4"		24028
197	1	Assembly, IB Occupied		31643A
198	2	Nut, #10-32 w/Lockwasher		18349
199	2	Screw, 1/4-20 x 3/4"		28986
200	1	Position Sensor Spacer		31092
201	1	Position Sensor Collet		31093
202	2	Nut, 1/4-20 Hex Lock		10775

Exploded View



"Providing Access to the World"®



**Over 300 Braun
Dealers Worldwide**

 **THE BRAUN
CORPORATION®**
"Providing Access to the World"



International Corporate Hdqrs: P.O. Box 310 Winamac, IN 46996 USA
1-800-THE LIFT (574) 946-6153 FAX: (574) 946-4670

Braun™ Five-Year Limited Warranty

The Braun Corporation of Winamac, Indiana, warrants that it will repair (or replace at Braun's sole option) any defect in material or workmanship in its wheelchair lift for five years*, providing the lift is installed, operated and maintained properly. This warranty is limited to the original purchaser and does not cover defects in the motor vehicle on which it is installed, or defects in the lift caused by a defect in any part of the motor vehicle.

This warranty commences on the date the lift is put in service, providing the warranty registration card is completed and received by The Braun Corporation within 20 days of purchase. If no warranty card is received, the warranty will expire three years from the date of manufacture as identified on the lift serial number tag.

This warranty also covers the cost of labor for the repair (or replacement at Braun's sole option) of parts for three years when performed by an authorized Braun representative. (A labor schedule determines cost allowance for repairs and is available upon request).

This warranty does not cover normal maintenance, service, or periodic adjustments necessitated by use or wear. The Braun Corporation will not, under any circumstances, pay for loss of use, incidental, or consequential damages related to the lift or vehicle in which it is installed.

This warranty will become null and void if the lift has been damaged through accident, misuse, or neglect, or if the lift has been altered in any respect.

* The five-year portion of this warranty covers the following lift's power train parts:

- Cable ▪ Cylinder ▪ Flow Control ▪ Gear Box ▪ Motor ▪ Pump ▪ Hydraulic Hose & Fittings
- Solid State Controller

All remaining lift components are covered by a three-year warranty.

Return Authorization Procedure

When processing any warranty claims (parts, repairs, etc.), all requests must be processed through The Braun Corporation Product Support Department. Call 1-800-THE LIFT® during normal working hours. Product Support will issue a Return Material Authorization (RMA) number and detail the procedures required for processing returns and/or authorizing credit.

The lift identification information is provided on the Braun Serial No./Series No. identification tag and the two warranty cards (shown on inside front cover). The lift identification information must be provided when filing a warranty claim or ordering parts.



International Corporate Hdqrs: P.O. Box 310 Winamac, IN 46996 USA
 1-800-THE LIFT (574) 946-6153 FAX: (574) 946-4670



31823 Rev. A
February 2008